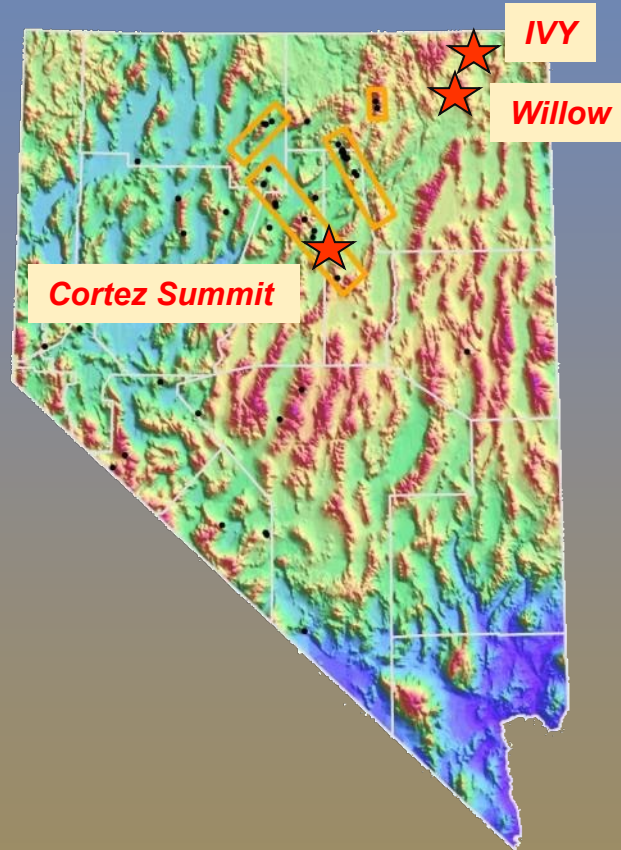


Carlin Gold

Exploring Nevada



Slide notes, when available, can be viewed by hovering over icon at top left

Forward Looking Statements

Forward looking statements: This presentation contains certain “forward-looking information within the meaning of Canadian securities legislation and “forward-looking statements” within the meaning of the United States Private Securities Litigation Reform Act of 1995 (collectively “forward looking statements”) concerning Carlin’s plans for its properties, operations and other matters. Forward-looking statements include predictions, projections and forecasts and are often, but not always, identified by the use of words such as “seek”, “anticipate”, “believe”, “plan”, “estimate”, “forecast”, “expect”, “potential”, “project”, “target”, “schedule”, “budget” and “intend” and statements that an event or result “may”, “will”, “should”, “could” or “might” occur or be achieved and other similar expressions and includes the negatives thereof. All statements other than statements of historical fact, including, without limitation, statements regarding potential mineralization, the estimation of mineral resources, the realization of mineral resource estimates, interpretation of prior exploration and potential exploration results, the timing and success of exploration activities generally, the timing and results of future resource estimates, permitting time lines, metal prices and currency exchange rates, availability of capital to Carlin and any joint venture partner, government regulation of exploration operations, environmental risks, reclamation, title, statements with respect to the future price of gold and other metals, and future plans and objectives of Carlin are forward-looking statements that involve various risks and uncertainties. There can be no assurance that such statements will prove to be accurate and actual results and future events could differ materially from those anticipated in such statements. Forward-looking statements are based on a number of material factors and assumptions. Important factors that could cause actual results to differ materially from Carlin’s expectations include actual exploration results, changes in project parameters as plans continue to be refined, results of future resource estimates, future metal prices, availability of capital and financing on acceptable terms to Carlin and any joint venture partner, general economic, market or business conditions, uninsured risks, regulatory changes, defects in title, availability of personnel, materials and equipment on a timely basis, accidents or equipment breakdowns, delays in receiving government approvals, unanticipated environmental impacts on operations and costs to remedy same, and other exploration or other risks detailed herein and from time to time in the filings made by the Company with securities regulators. Although the Company has attempted to identify important factors that could cause actual actions, events or results to differ from those described in forward-looking statements, there may be other factors that cause such actions, events or results to differ materially from those anticipated. There can be no assurance that forward-looking statements will prove to be accurate and accordingly readers are cautioned not to place undue reliance on forward-looking statements.

Information Regarding Adjacent Properties

This presentation may contain information about the Fourmile, Goldrush and other gold mines or deposits in Nevada on which the Company has no ownership interest (the "Other Properties"). All technical and other information regarding the Other Properties has been sourced from publicly available sources and are believed by management of the Company to be reliable. Although management of the Company believes these sources to be reliable, the Company has not independently verified any of the data nor ascertained the underlying assumptions relied upon in such sources. Such data is subject to variations and cannot be verified due to limits on the availability and reliability of data inputs and other limitations and uncertainties inherent in any third-party source. All of the Other Properties presented herein have inherent risks that are uniquely associated with each property.

Inclusion of the Other Properties herein is meant to demonstrate some parameters for the type of mineral deposit that the Company may encounter while conducting exploration on its properties. The Company cannot state, and it should not be implied, that the results of exploration and development activities on the Other Properties will be similar on its properties or that similar mineralization will be discovered on its properties. All investors are cautioned that mineral deposits on Other Properties are not proof of mineral deposits on the Company's properties. A mineral deposit has not yet been discovered on any of the Company's properties. If any of the information on the Other Properties herein contains a misrepresentation, an investor does not have a remedy under applicable securities legislation.

Qualified Persons: *Robert Thomas, CPG (No. 10314), is the Qualified Person as defined by National Instrument 43-707 and Regulation S-K (Subpart 7300) and has reviewed and approved the technical data in this presentation.*

Corporate Summary

- **3 wholly-owned quality Nevada properties**
- **Cortez Summit property next door to NGM's 12.7 million oz Goldrush mine and Barrick's 7.8 million oz Fourmile resource**
- **4 square mile claim block at Cortez Summit is largely underexplored**
- **Early-stage Nevada Copper-Gold Project targeting skarn/porphyry mineralization**
- **Targets defined at Willow – New Nevada Gold Trend?**
- **100% ownership of properties allows program flexibility**

Team

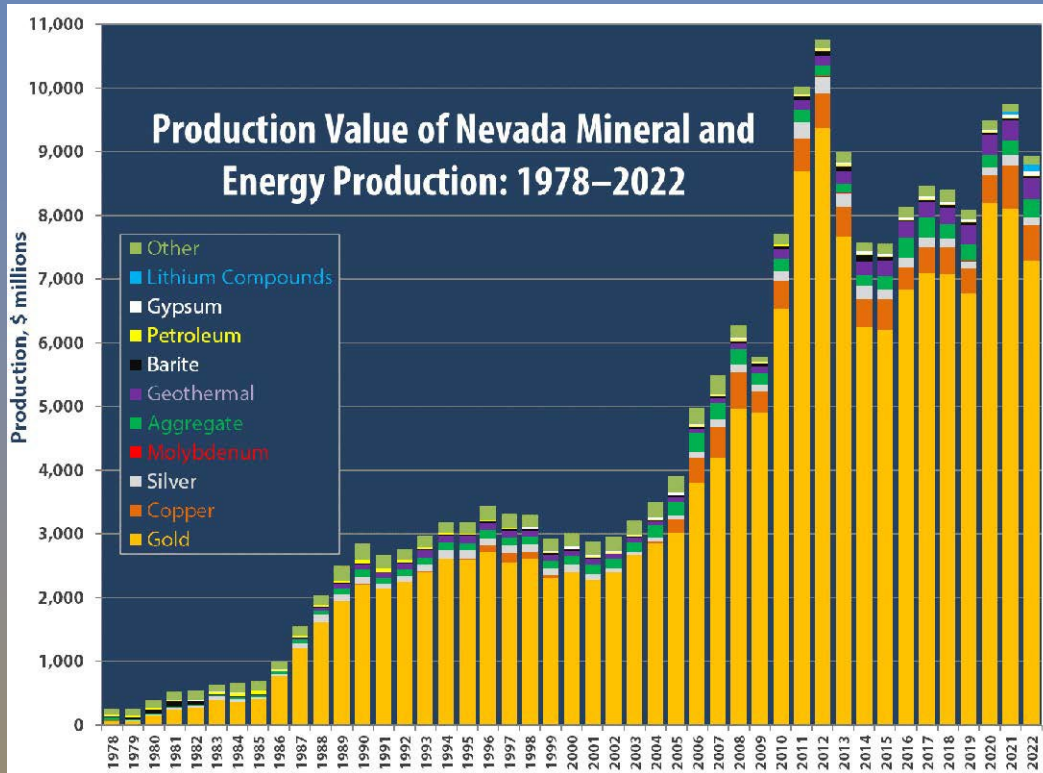
Directors and Officers

- **K. Wayne Livingstone – President / CEO**
- **Robert Thomas – VP Exploration**
- **Aris Morfopoulos – CFO**
- **Robert Culbert – Director**
- **Dong Shim - Director**

Strategic Advisors

- **Cal Everett**
- **Craig Roberts**
- **Fareed Ahamed**

WHY NEVADA?

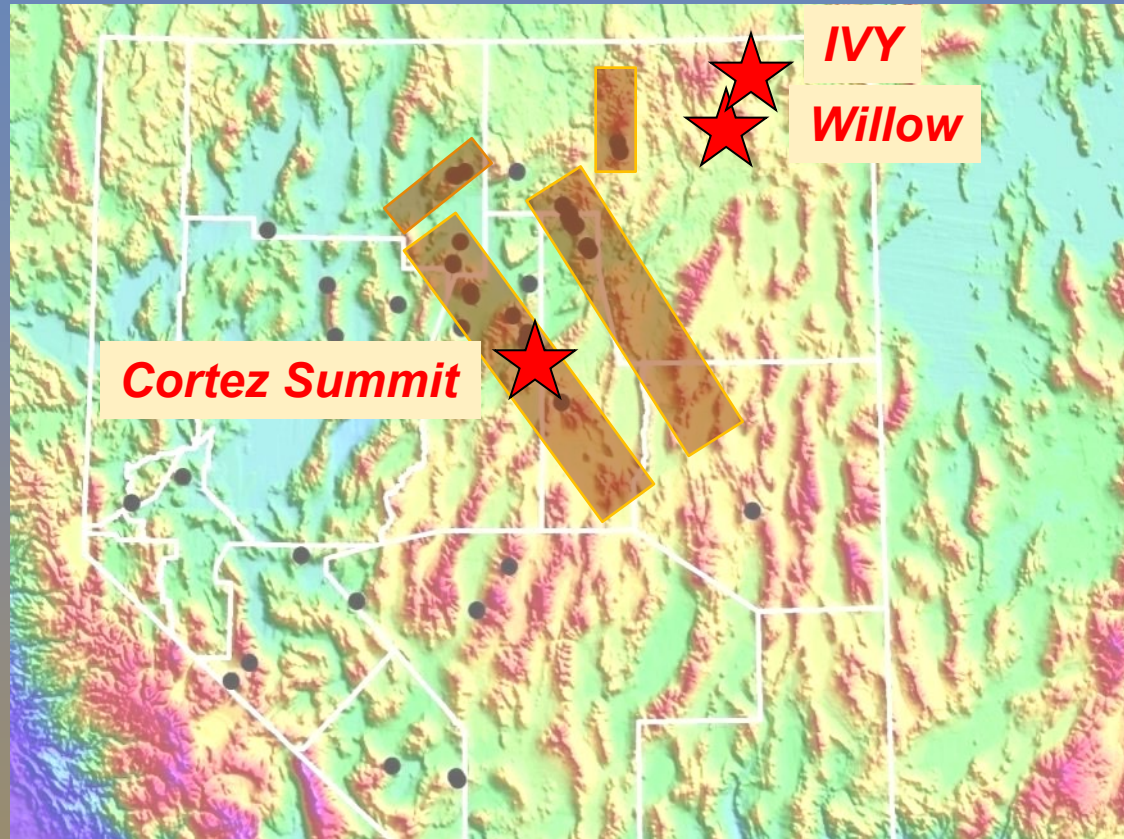


Source – Nevada Bureau of Mines and Geology



- “Elephant Country”
- 6th in world in gold production
- +60 + 1 MM oz deposits
- Stable, low risk area

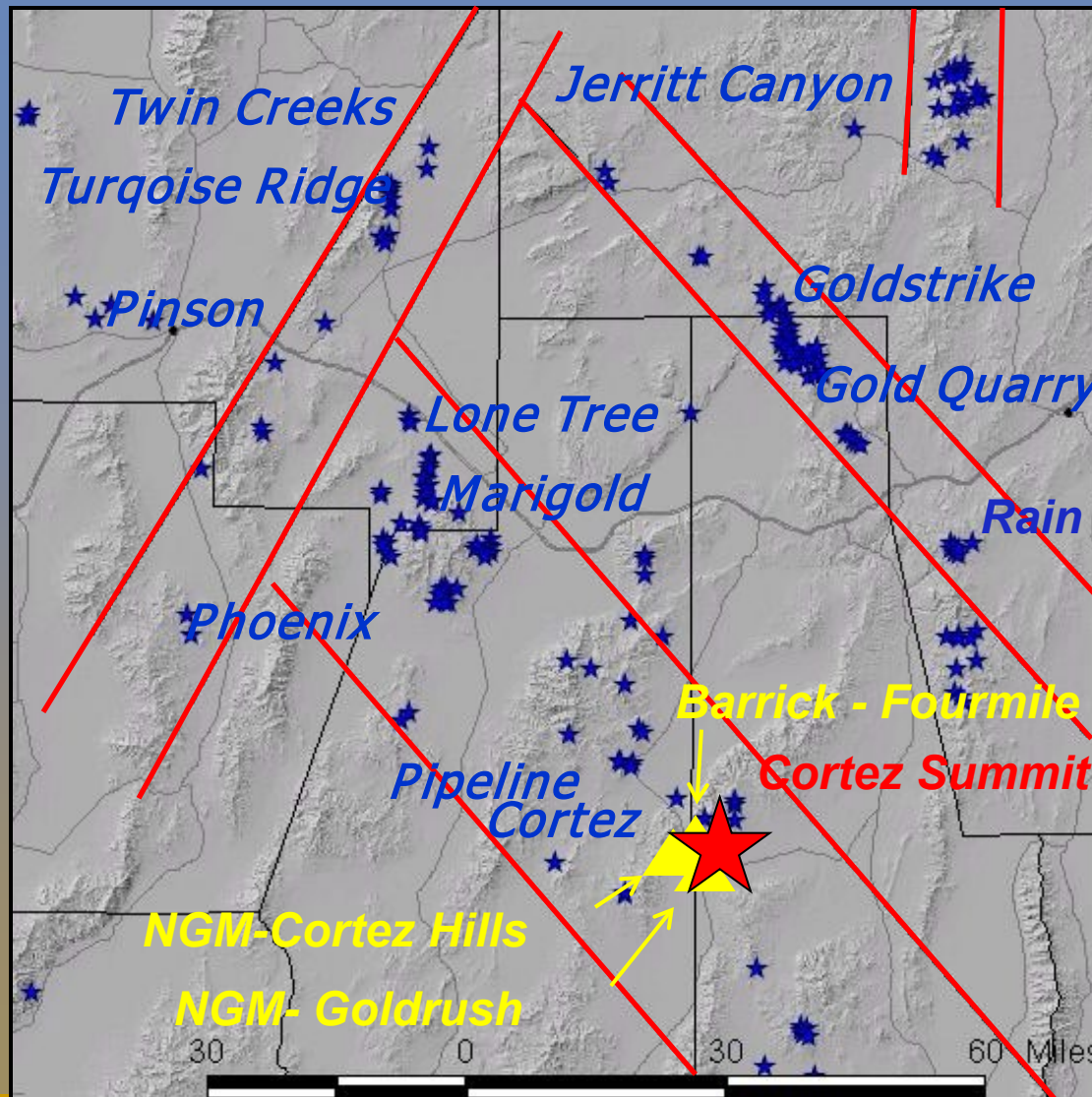
Nevada Gold Trends



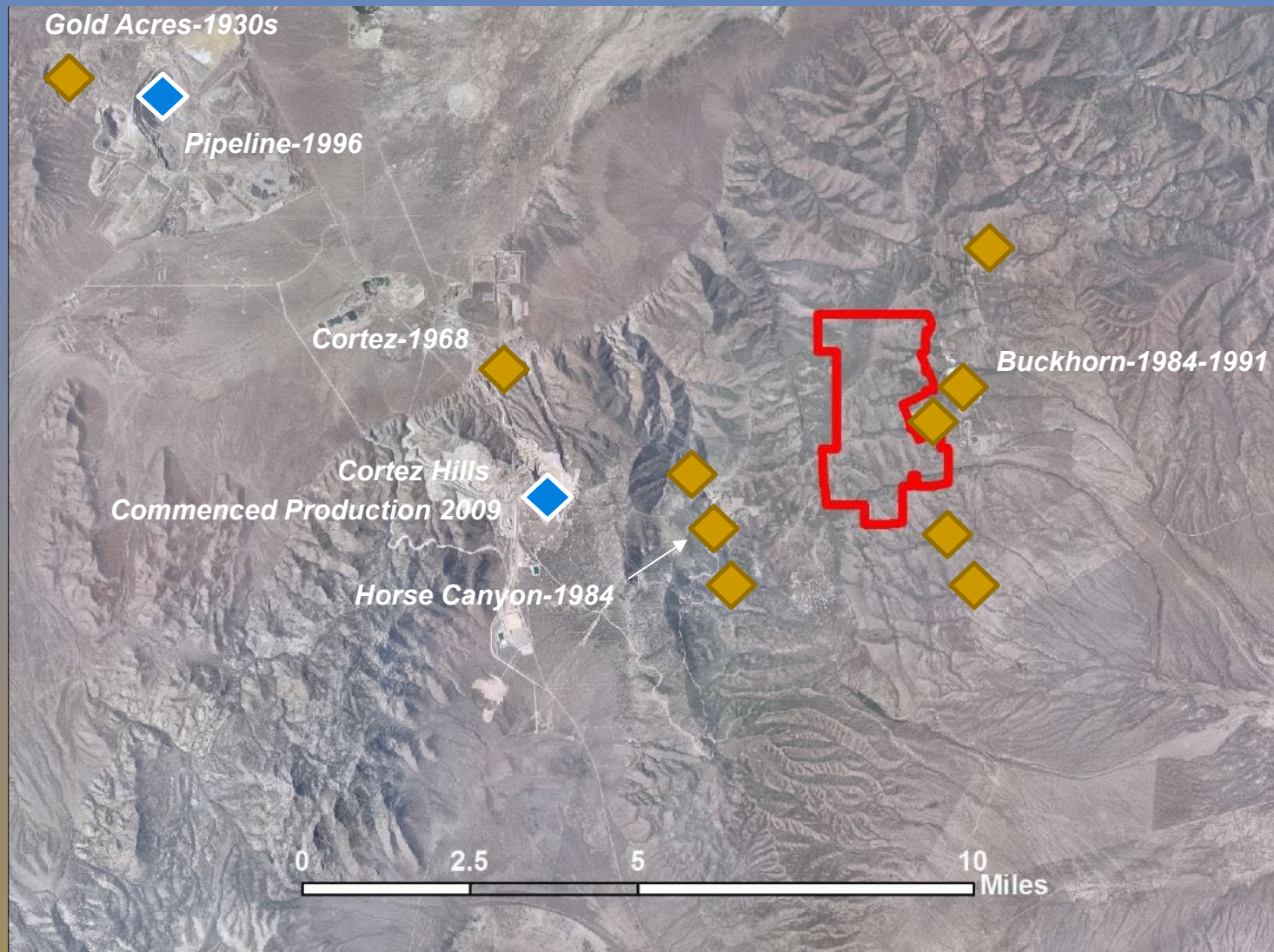
- 1 million oz gold deposit

***Carlin-type deposits have produced + 125 MM oz
Currently contribute over 80% of oz produced in Nevada***

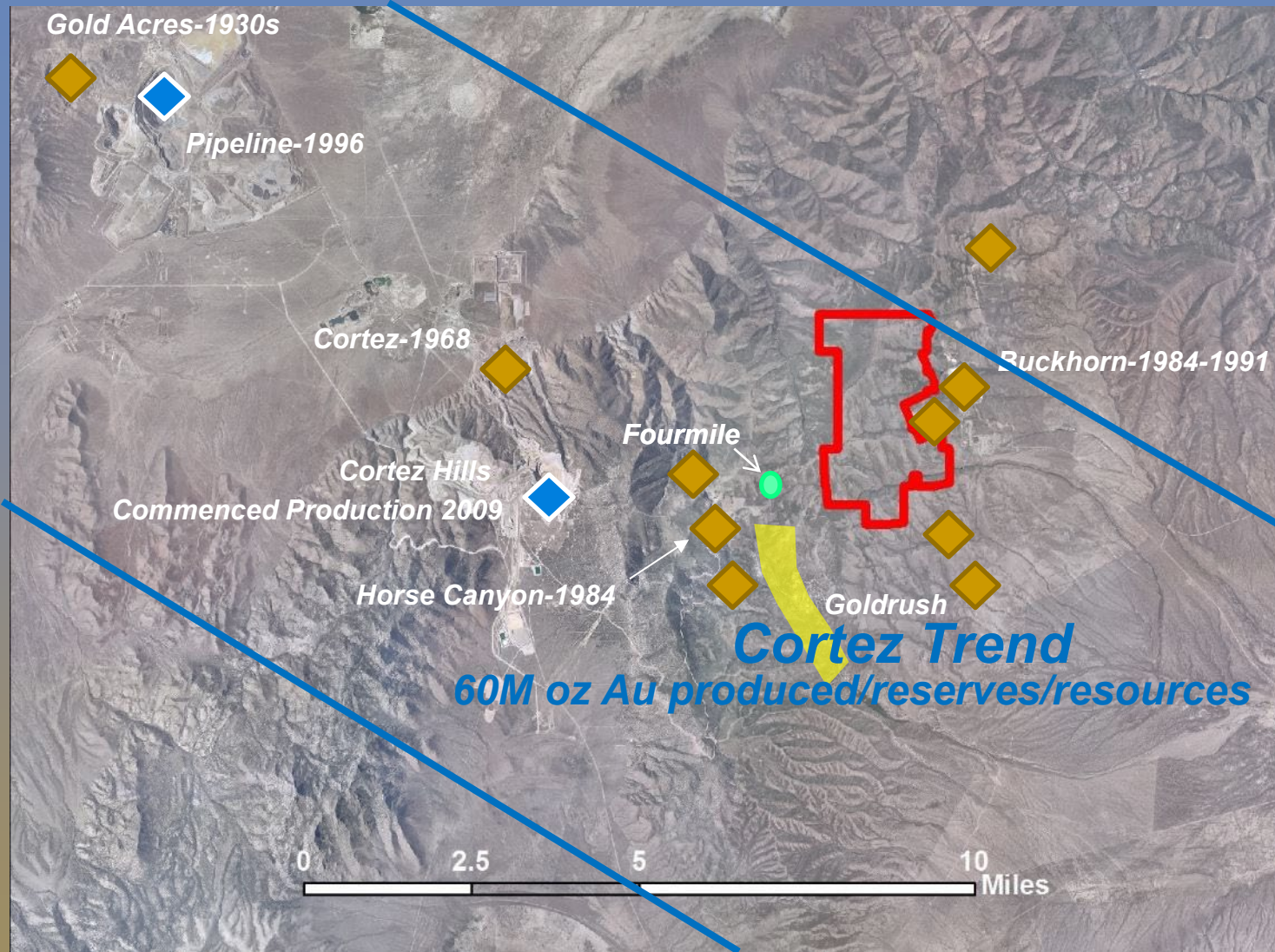
CORTEZ SUMMIT



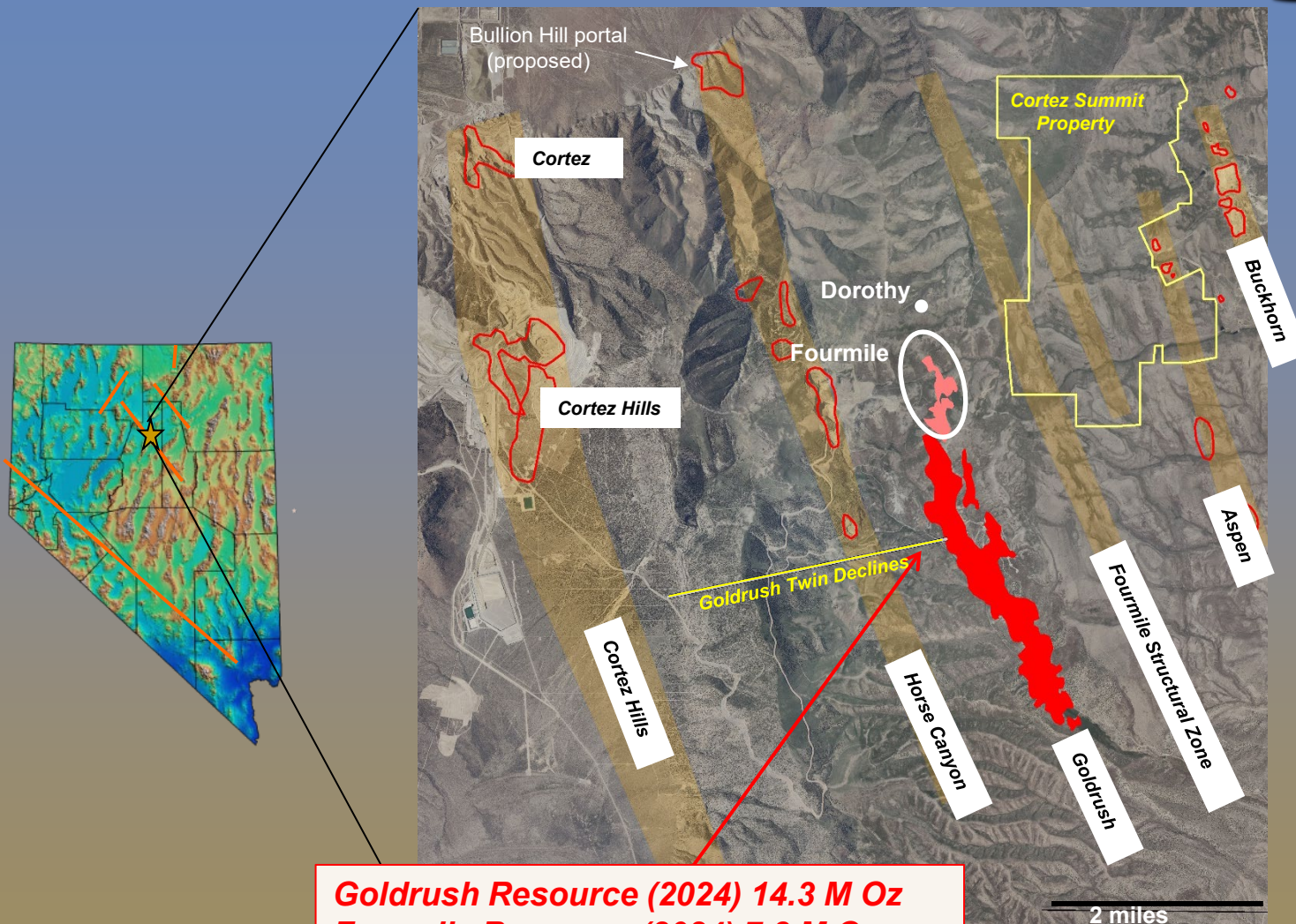
Cortez Trend



Cortez Trend

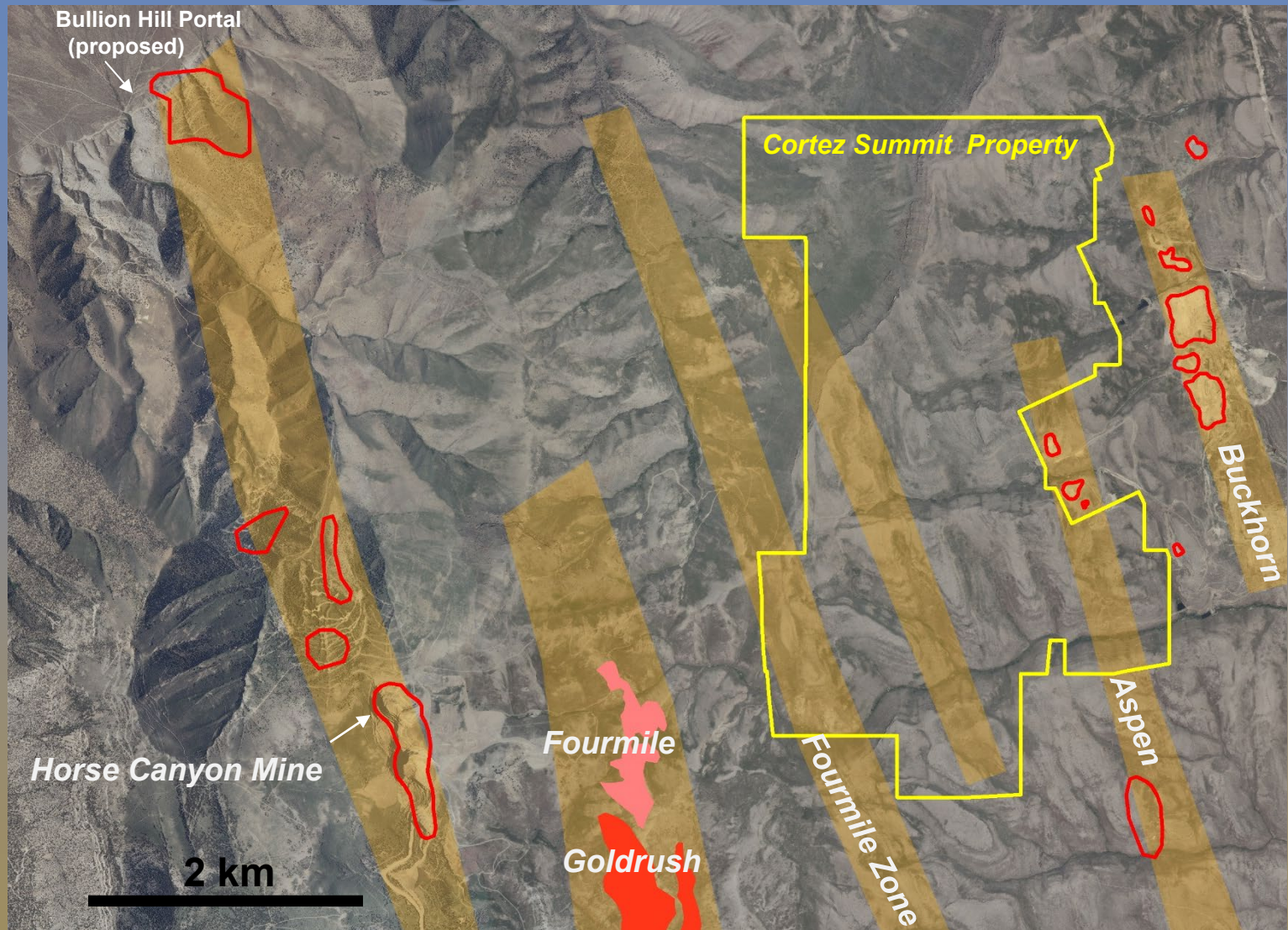


Cortez Summit Region

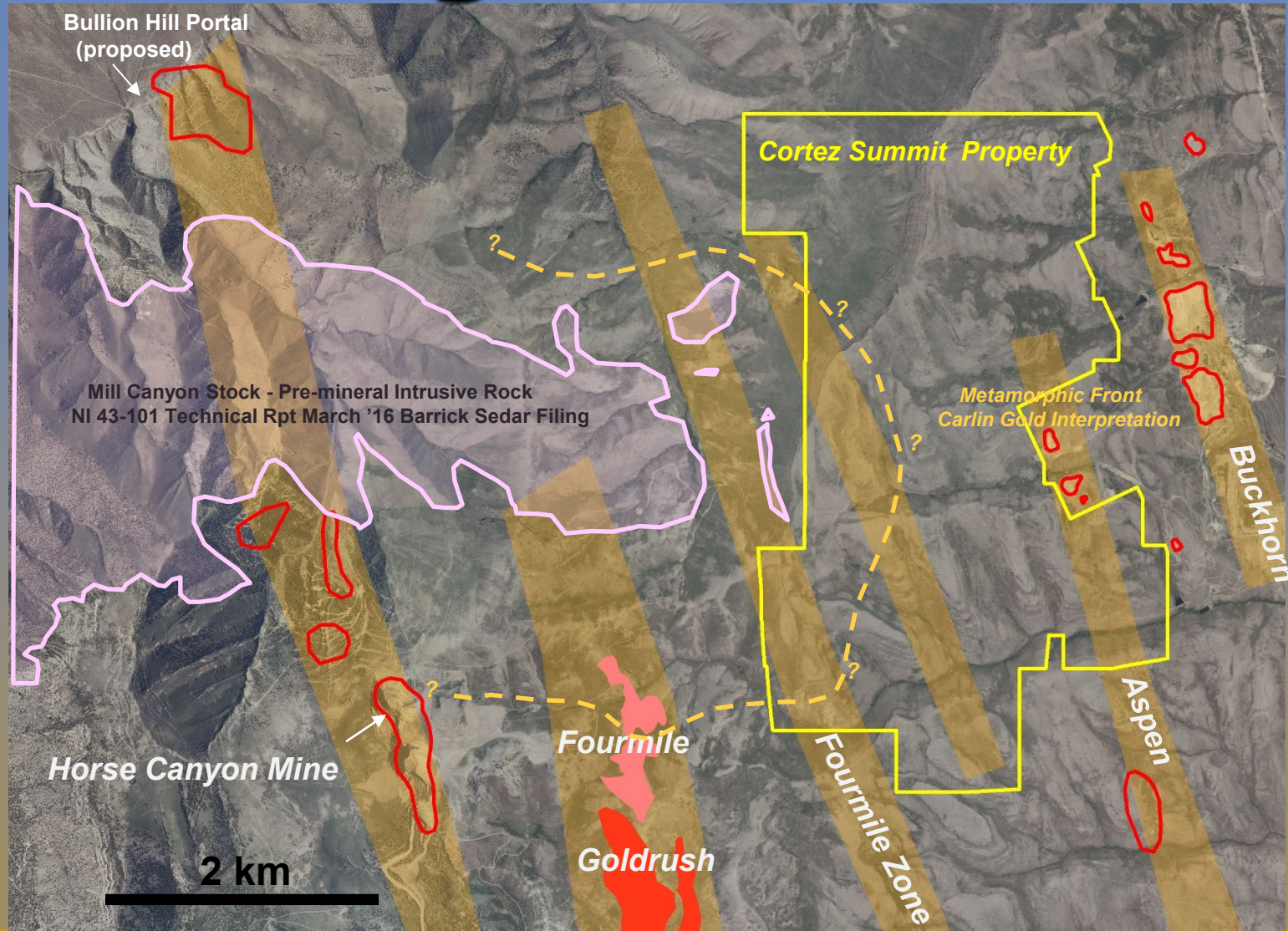


Goldrush Resource (2024) 14.3 M Oz
Fourmile Resource (2024) 7.8 M Oz

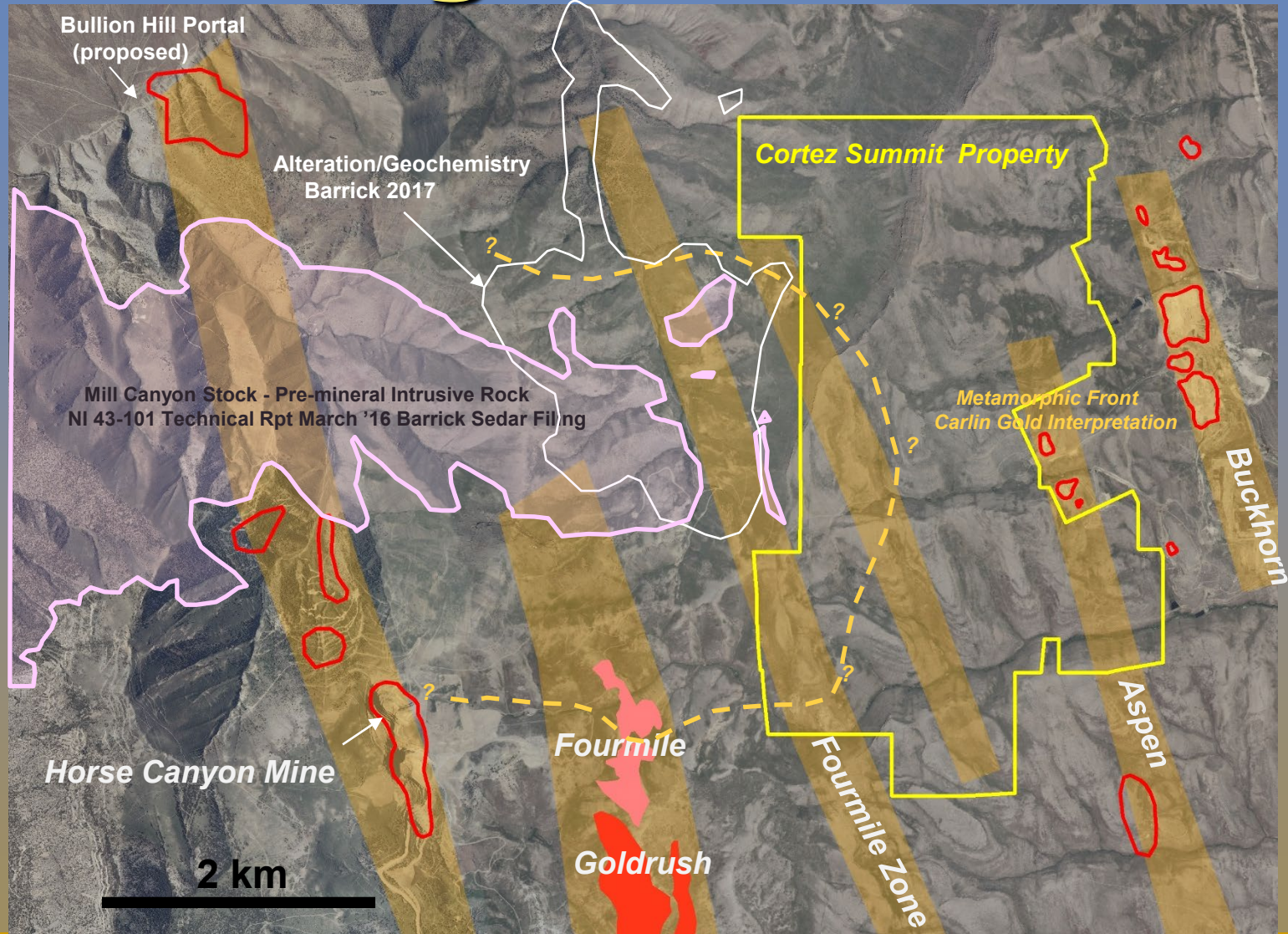
Geological Controls



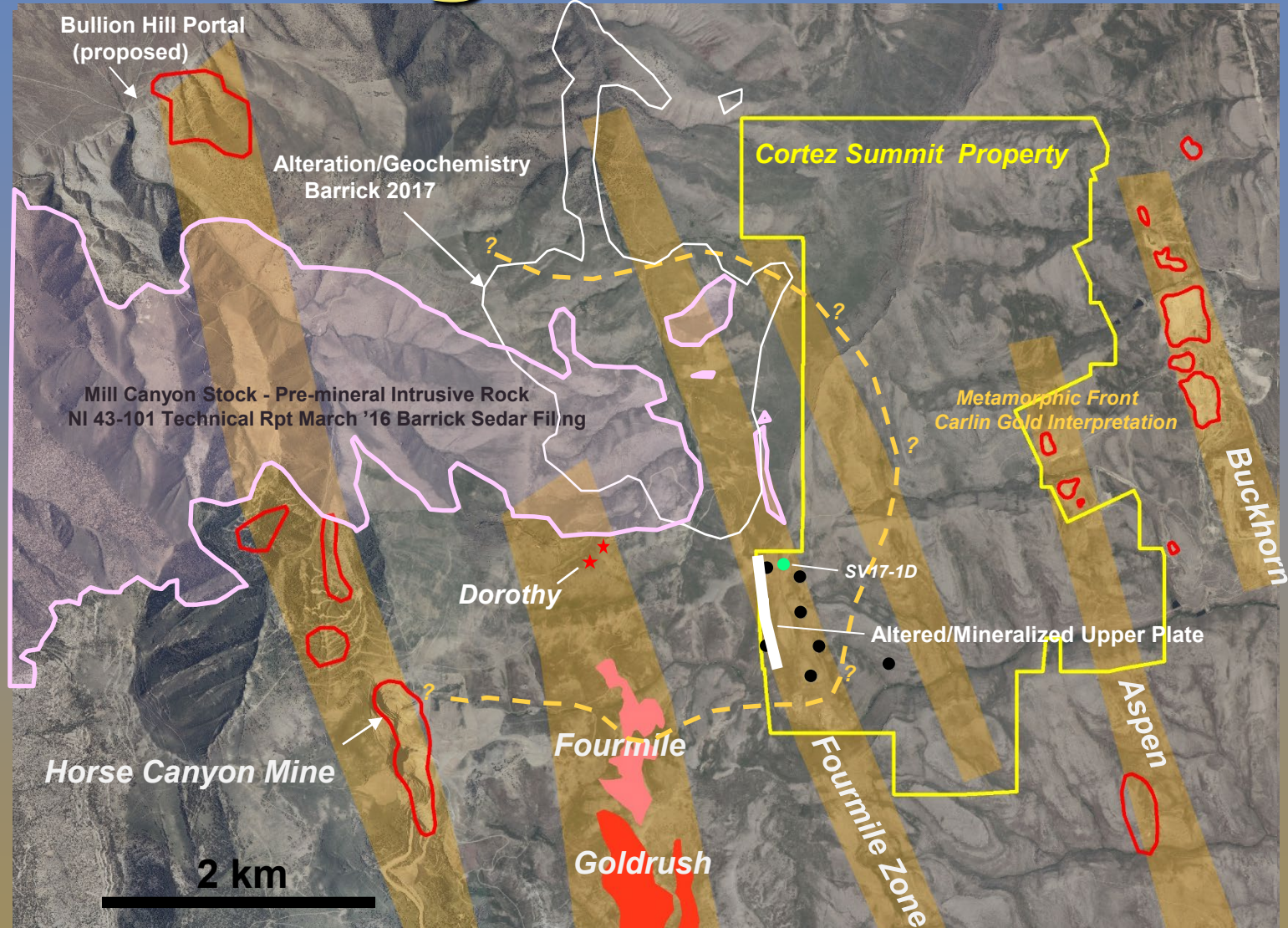
Geological Controls



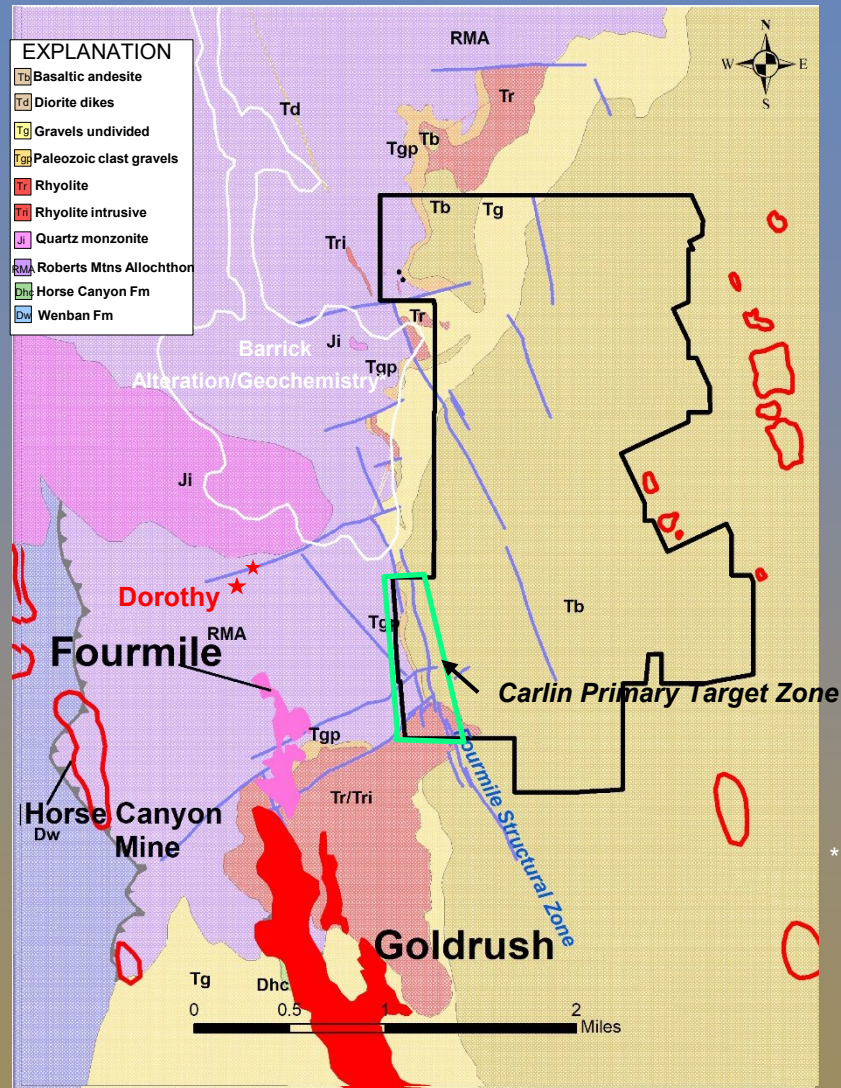
Geological Controls



Geological Controls

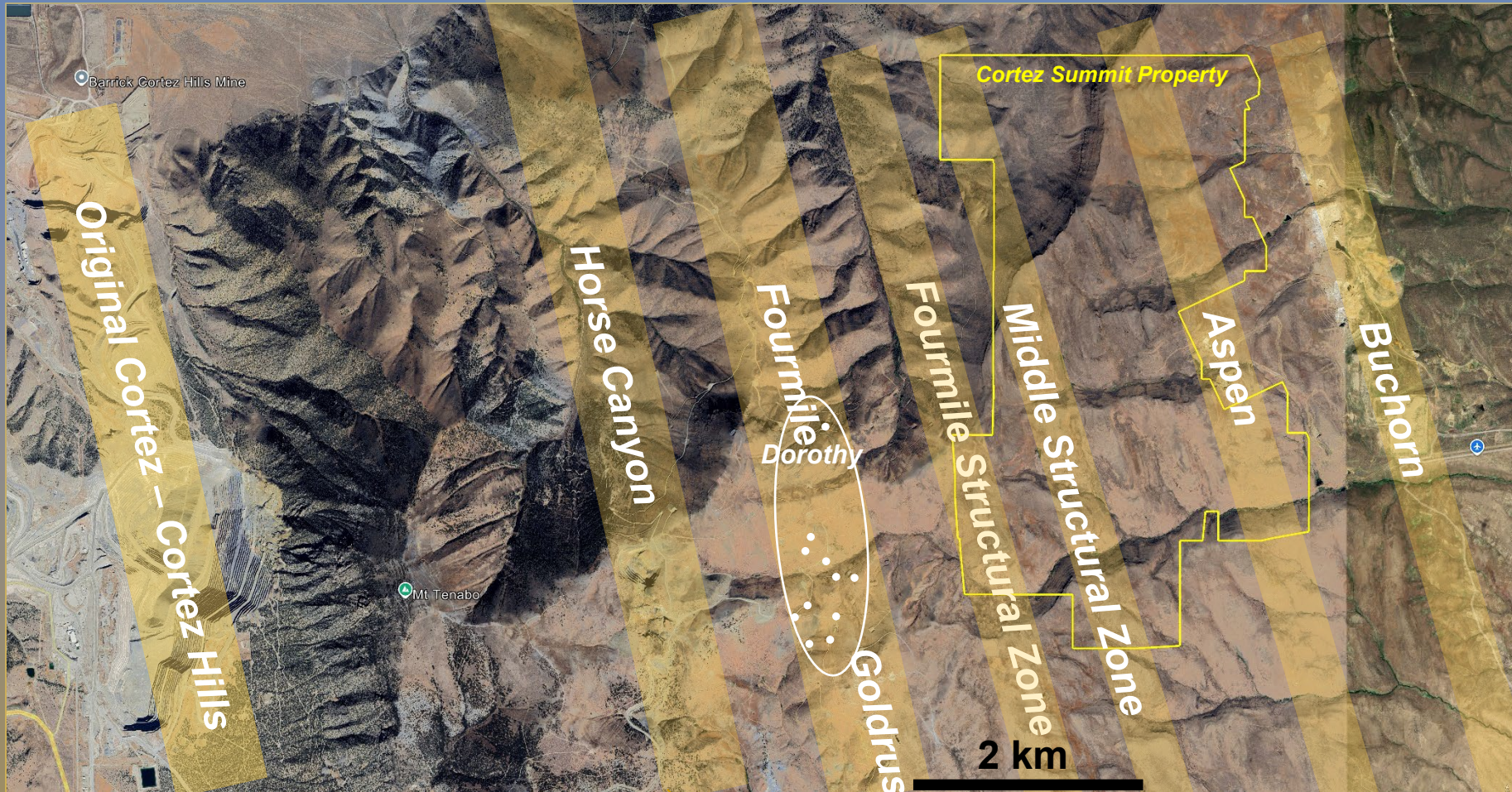


Geology

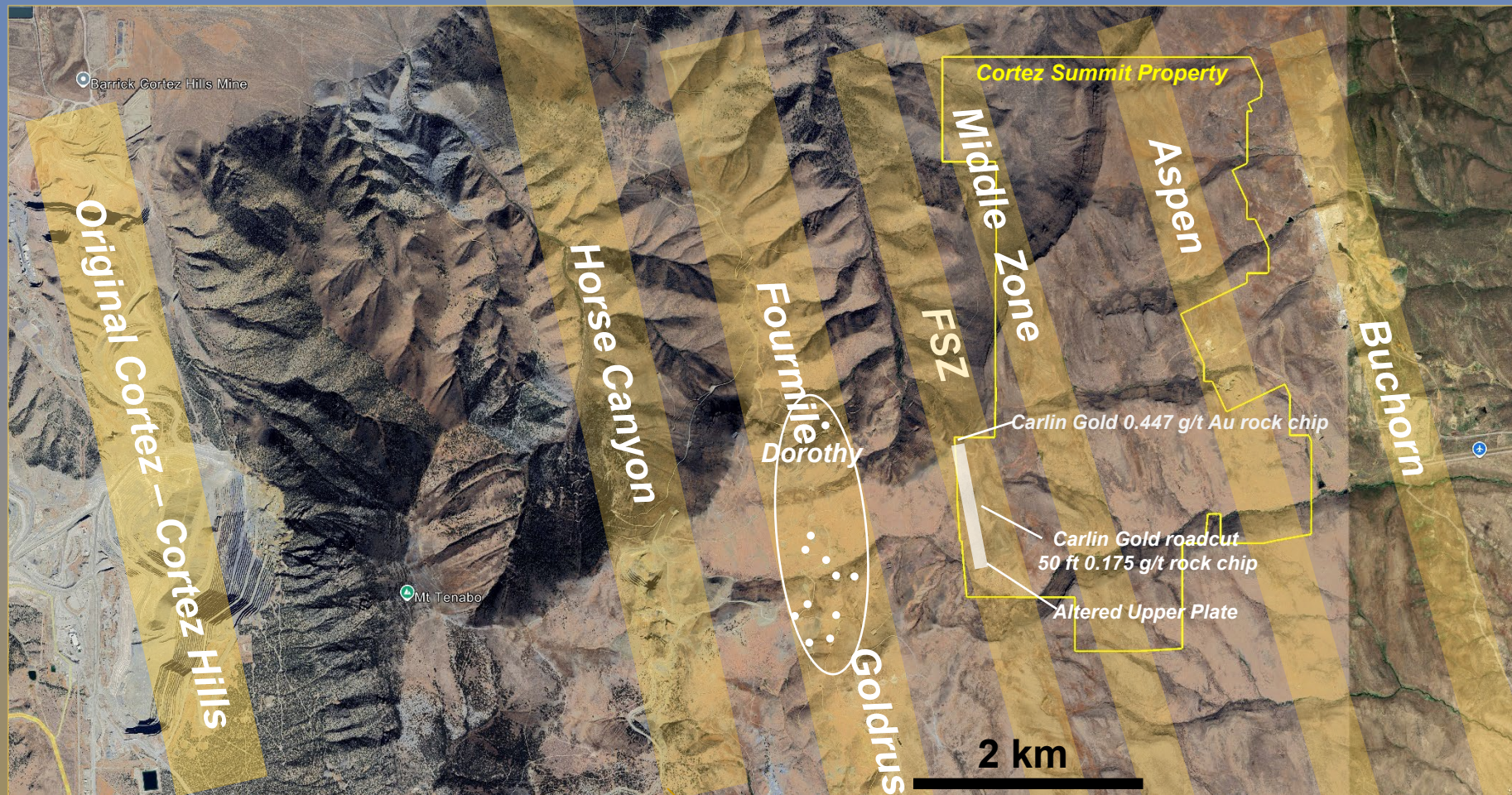


* source-Barrick webcast Feb '18

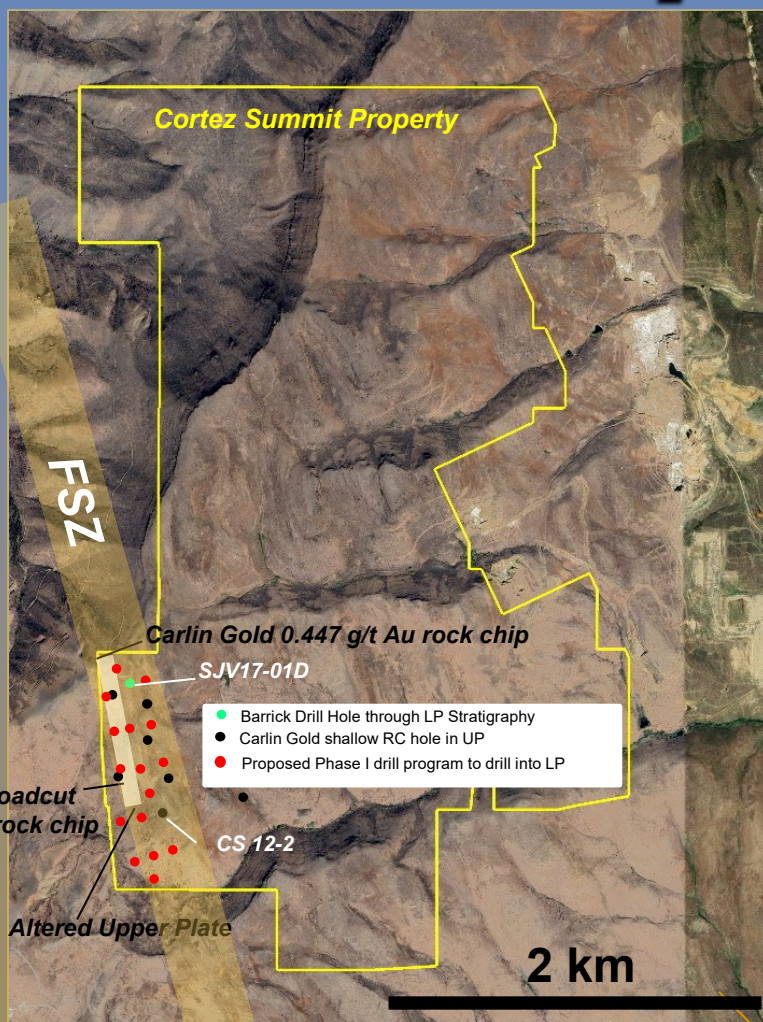
Regional Setting



Regional Setting



Primary Opportunity

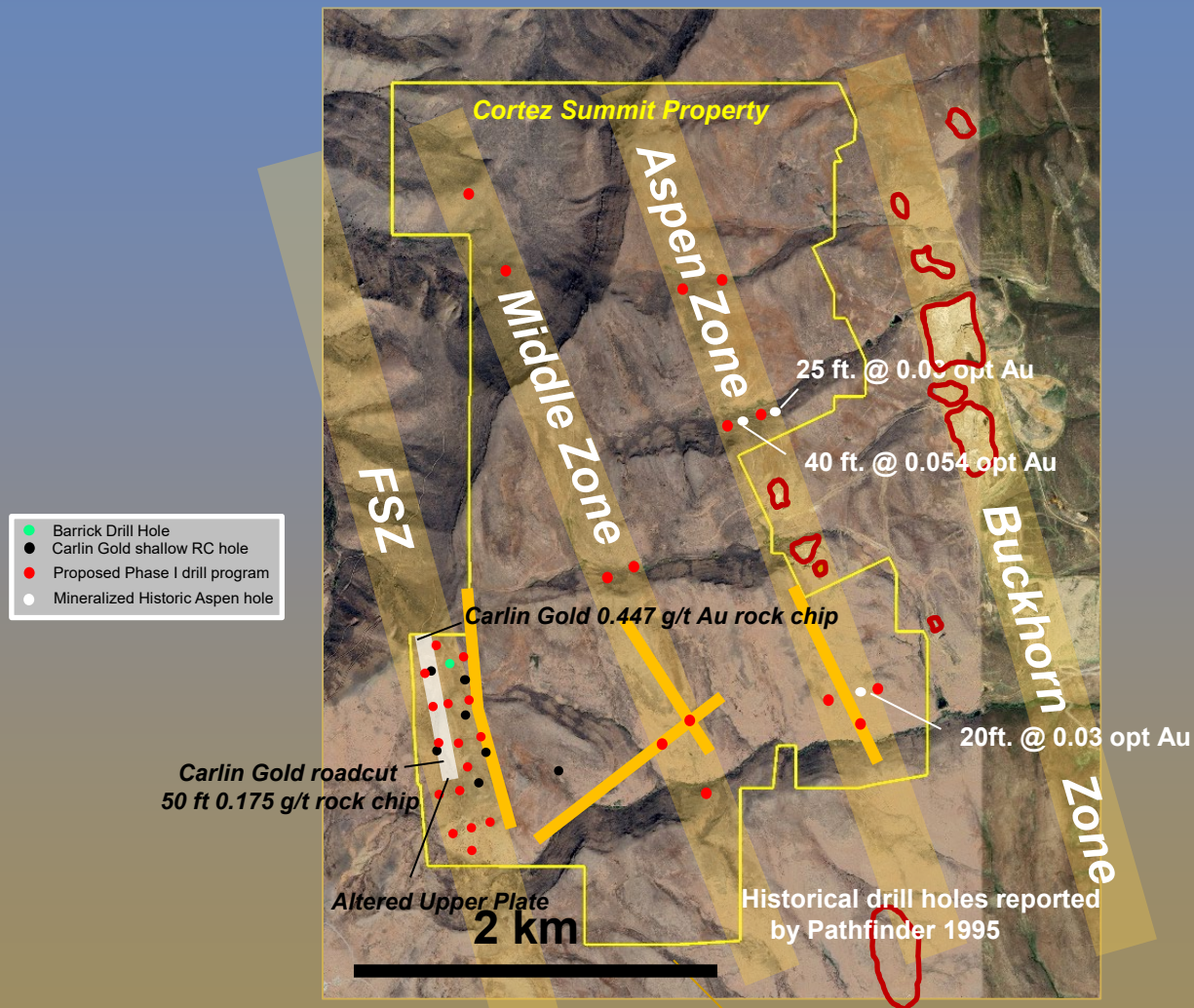


SJV 17-01D (green dot) tested Lower Plate down through Goldrush host horizons. Encountered +550 ft of strong alteration in Upper Plate with elevated As, Sb, Hg, Tl and Au to 6.2 g/t

Carlin (black dots) drilled 7 shallow RC holes bottoming in Upper Plate CS 12-2 deepened with core, penetrated Lower Plate, bottomed above main Goldrush host rocks.

Proposed deeper hole collars (red dots)

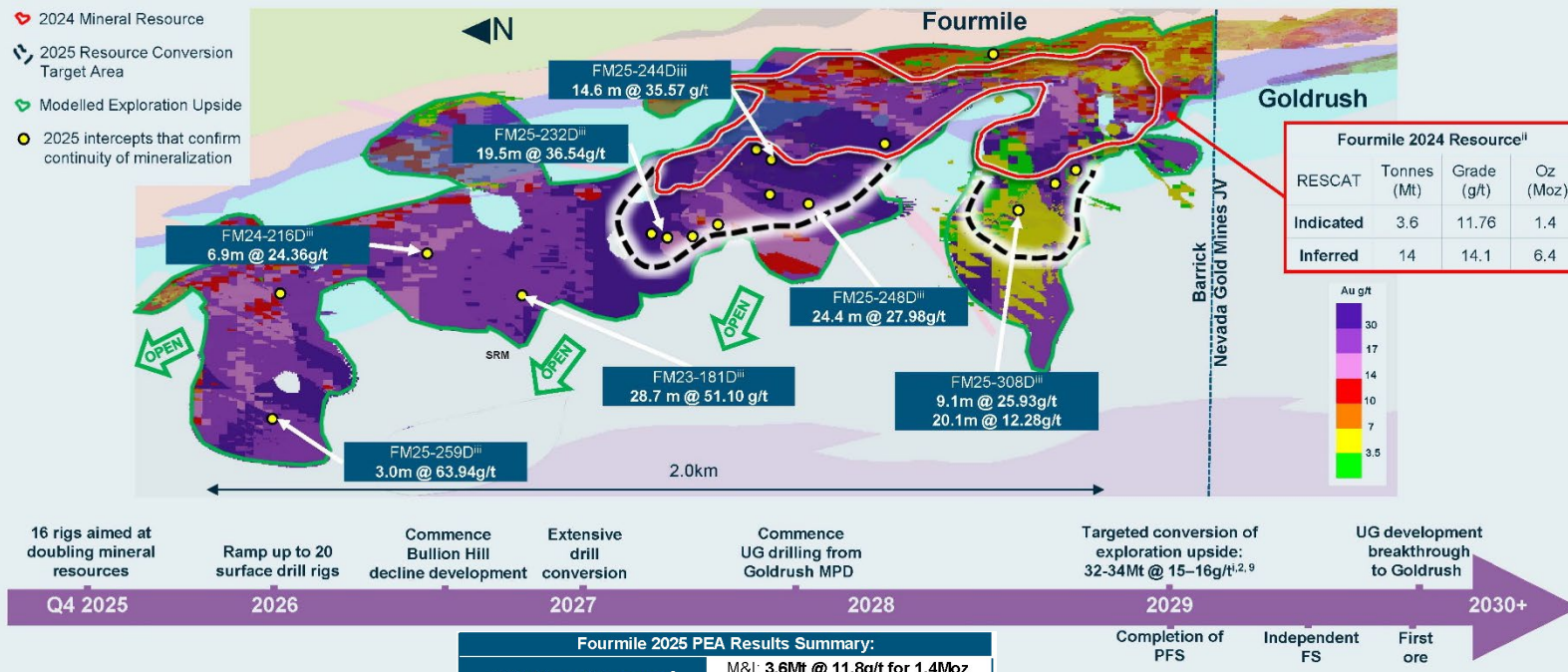
Additional Opportunities



November News - Barrick

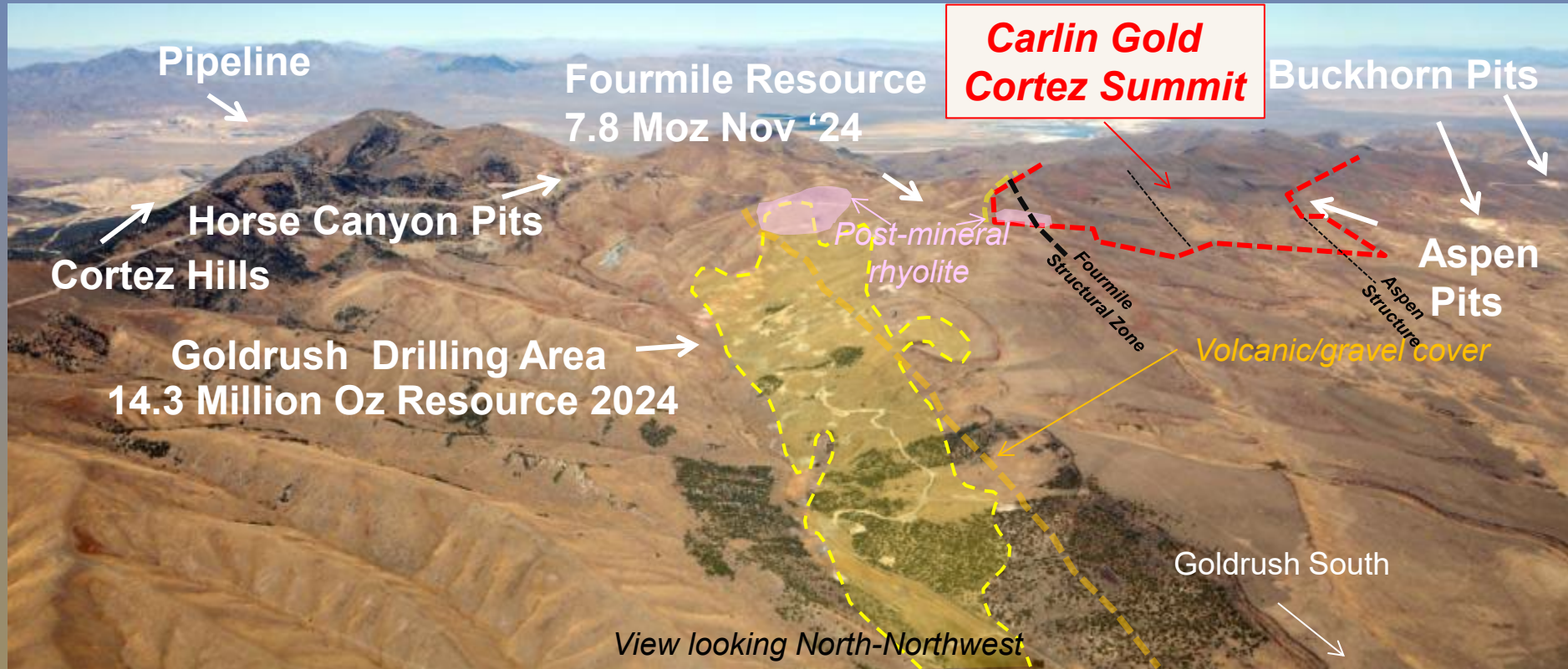
Fourmile

Pathway to delivering one of this century's most significant gold discoveries



Source: Barrick Q3 2025 Results Presentation

Cortez Summit Project



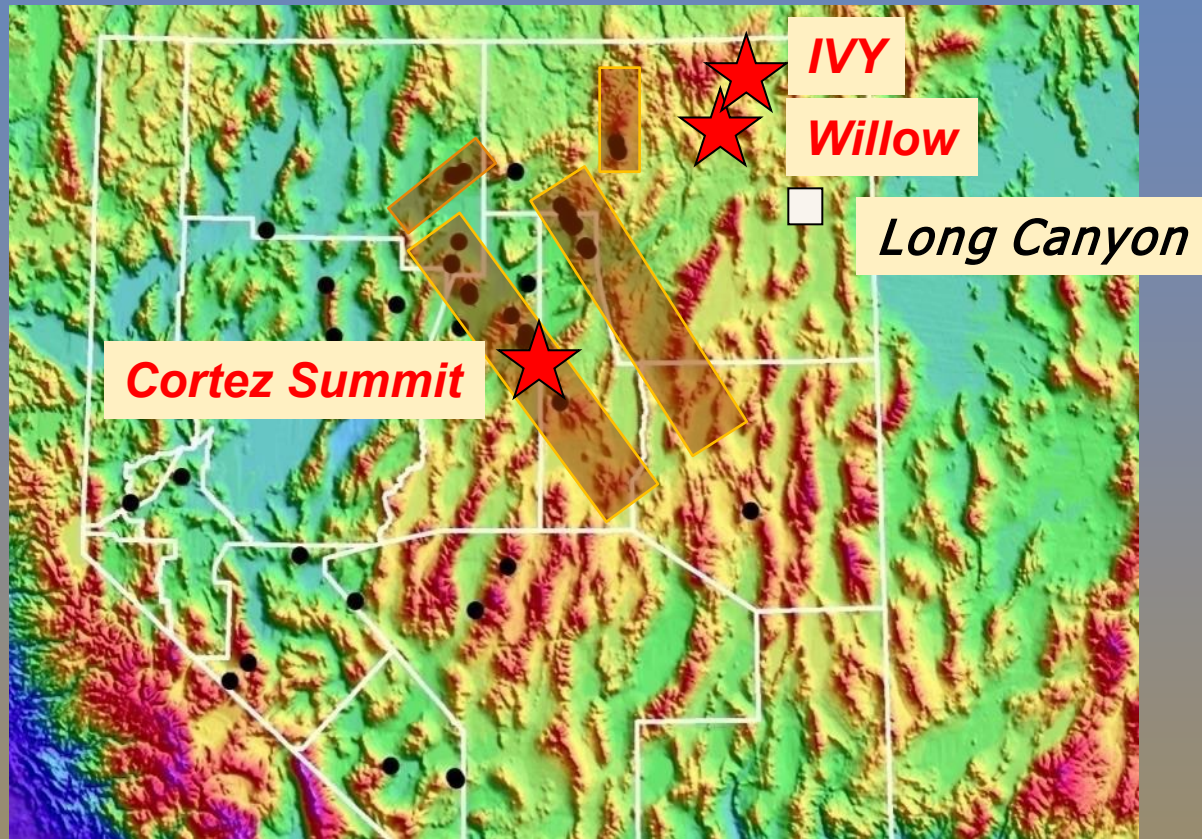
Cortez Summit and Cortez Deposits



Cortez Summit Project



Nevada Gold Trends



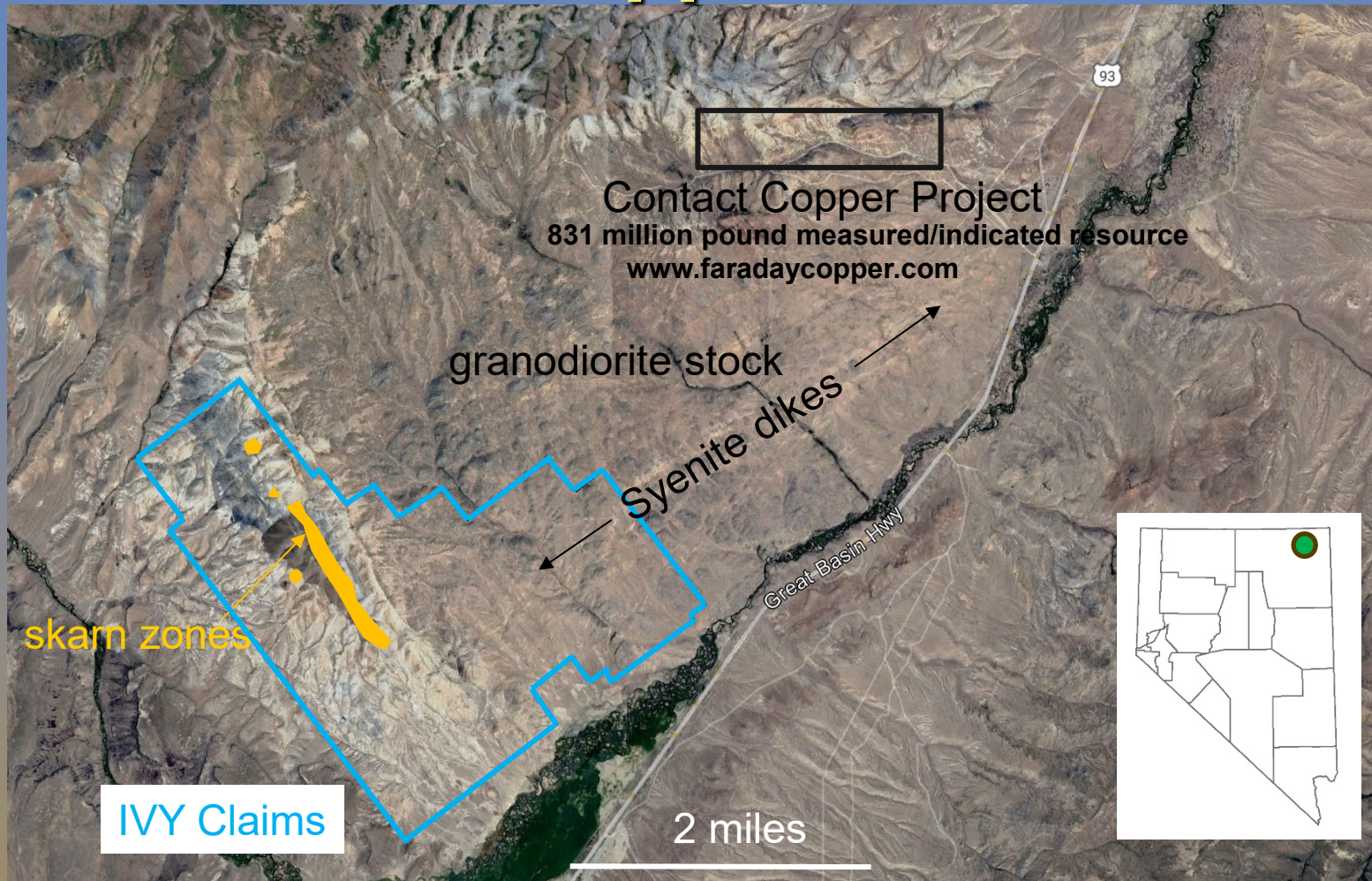
● 1 million oz gold deposit

Ivy Copper-Gold Project

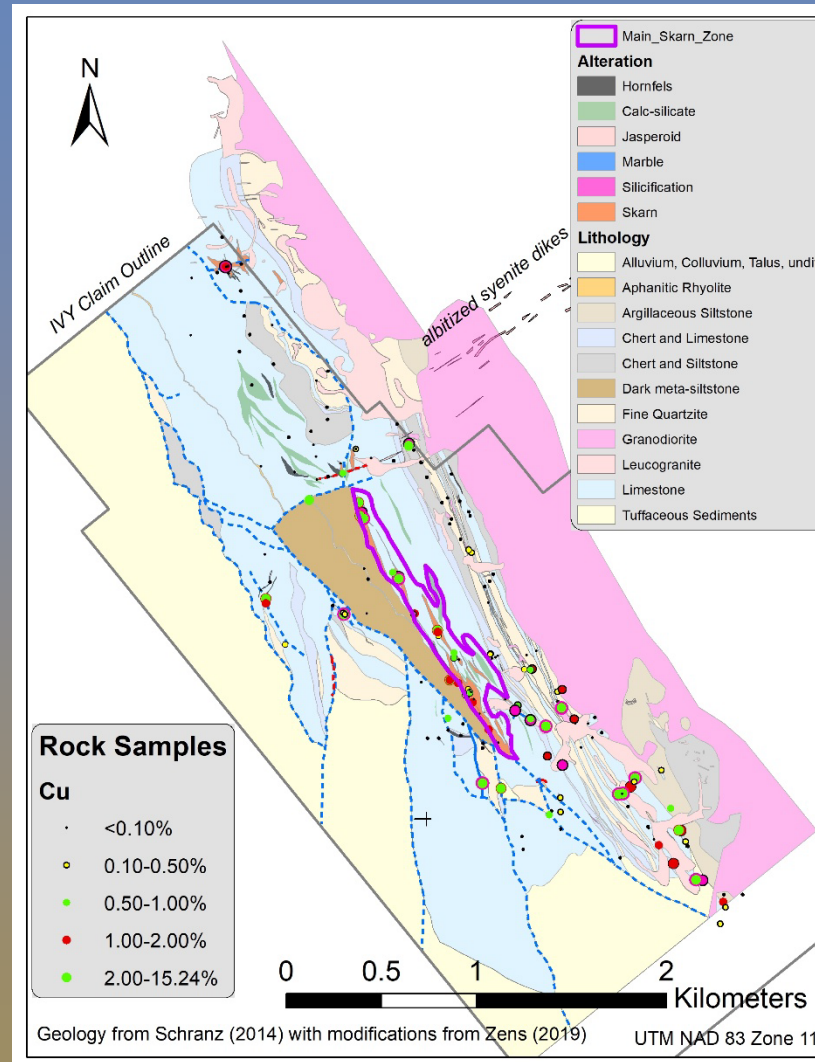
- 161 claims in Contact Mining District, Elko County, Nevada. 100% interest subject to mineral royalty.
- Rock chip sampling indicates widespread but localized copper mineralization in an area 4.3 km long by up to 1.4 km wide.
- Detailed mapping has identified a 1.6 km long and up to 150 m wide area with localized calc-silicate skarns containing disseminated chalcopyrite and bornite, the “Main Skarn Zone” (MSZ)
- DC Resistivity/Induced Polarization survey was completed utilizing 75 and 200 meter dipole arrays
- 75 meter dipole survey identified an IP anomaly spatially coincident and beneath the “Main Skarn Zone”. The IP anomaly is at least 1500 meters long, 200-300 meters wide, and may be open at depth*
- Deep IP anomalies are encountered on all three surveyed 200 meter dipole lines, indicating the 75 m IP anomalies may continue deeper and also outlining a separate adjacent deep area of chargeability.
- Observed IP values are consistent with the expected response from disseminated sulfide mineralization*
- The anomalous IP responses combined with the surface geology present excellent opportunities for drill targeting.

*Zonge International October 2025 Data Analysis Report

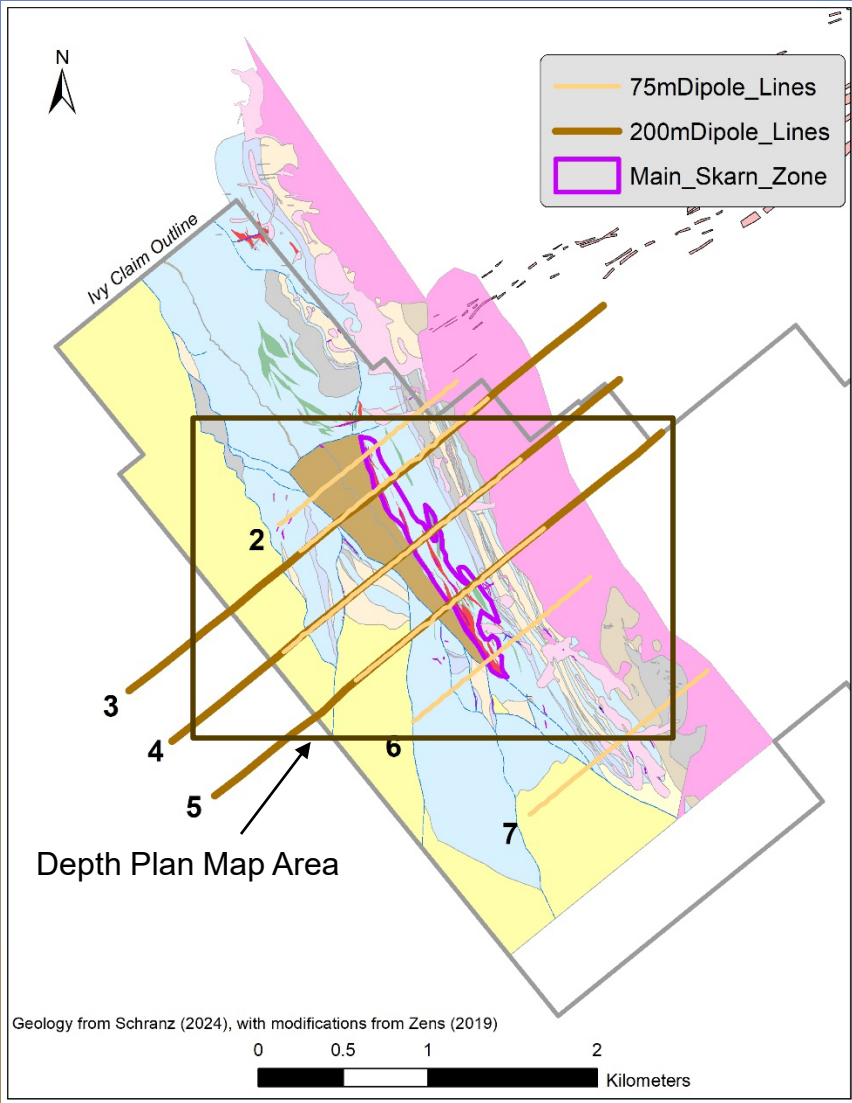
IVY Copper-Gold



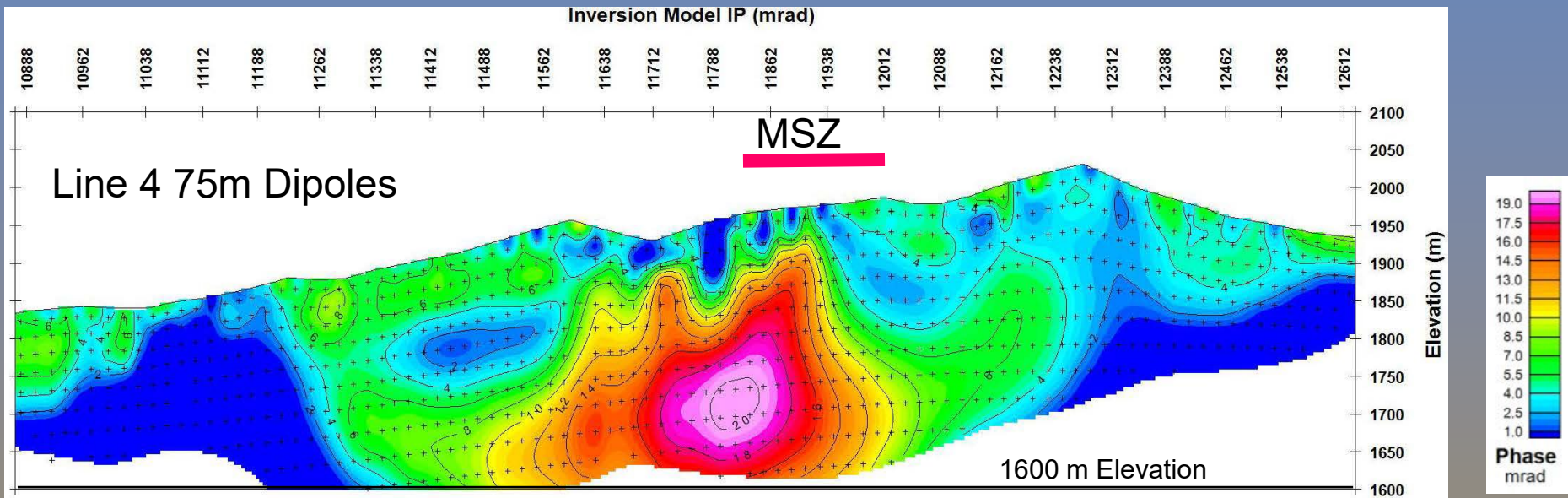
IVY Copper-Gold



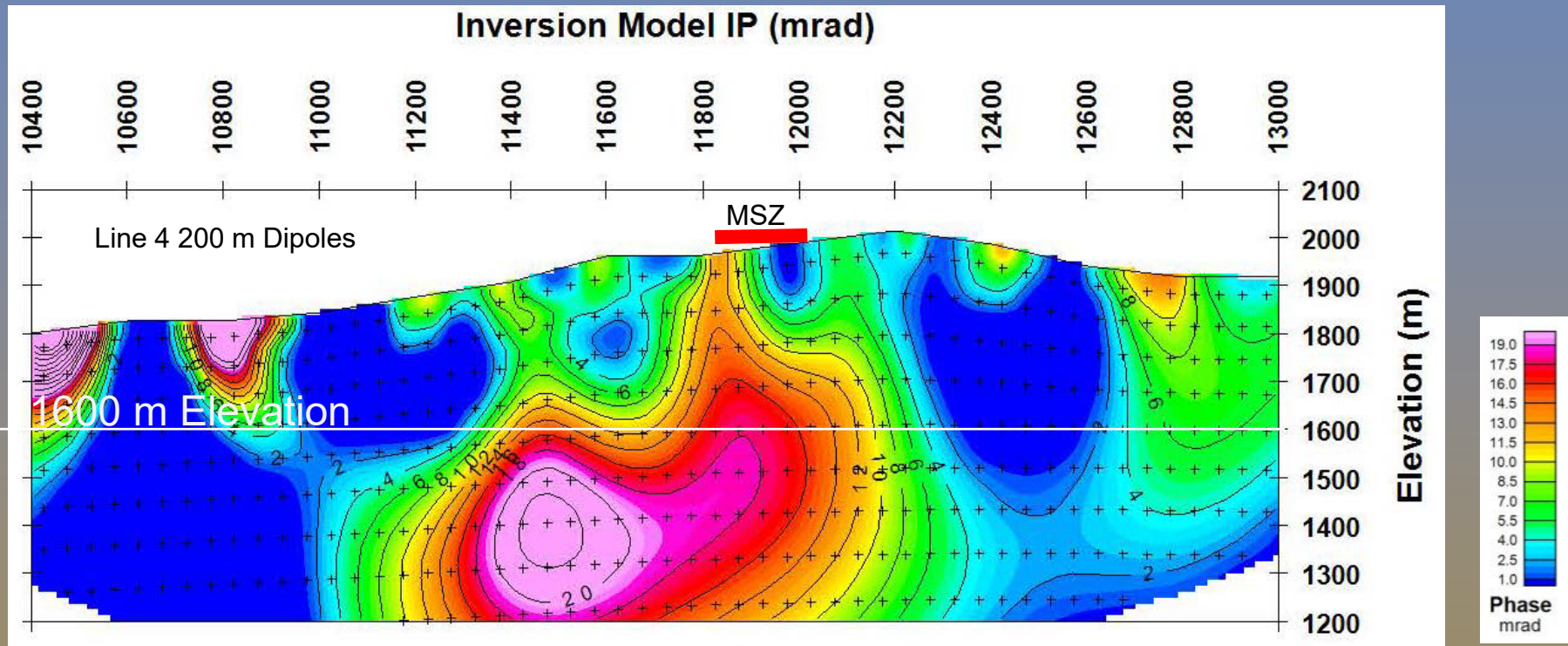
IVY IP LINES



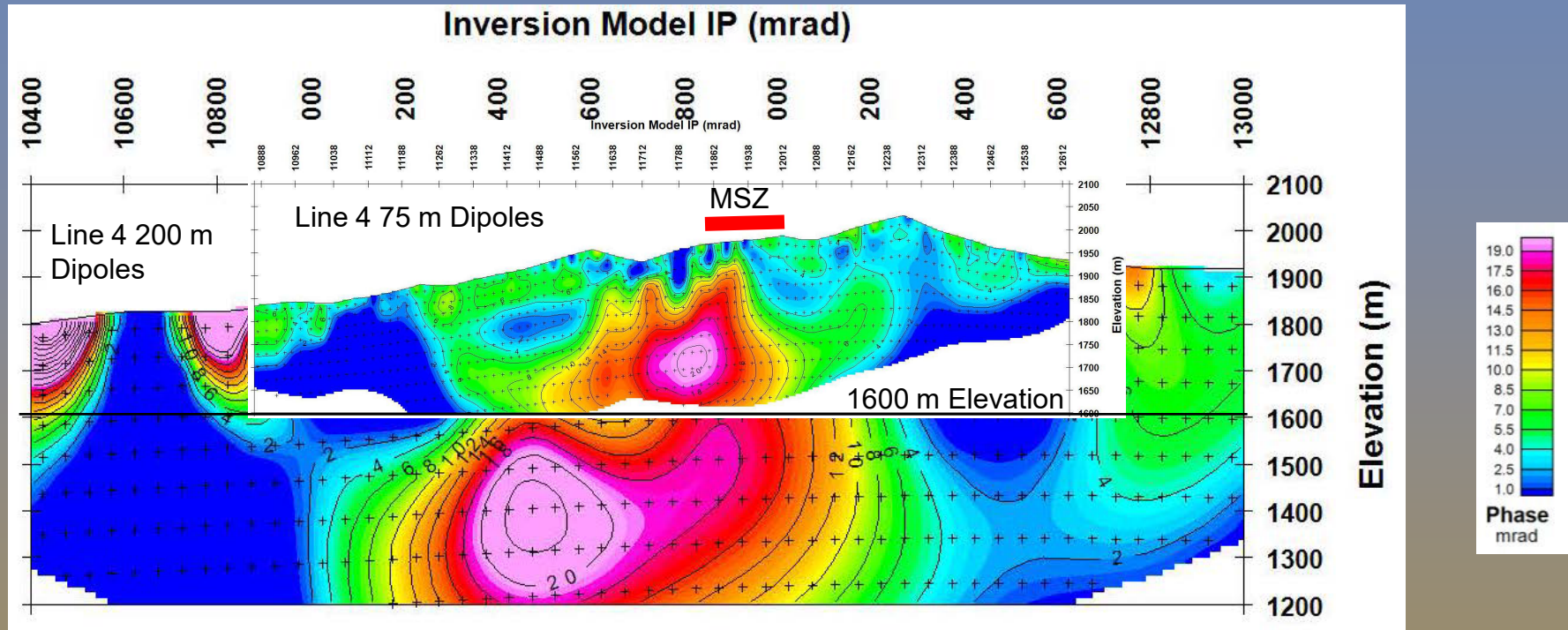
IVY IP Inversion Line 4



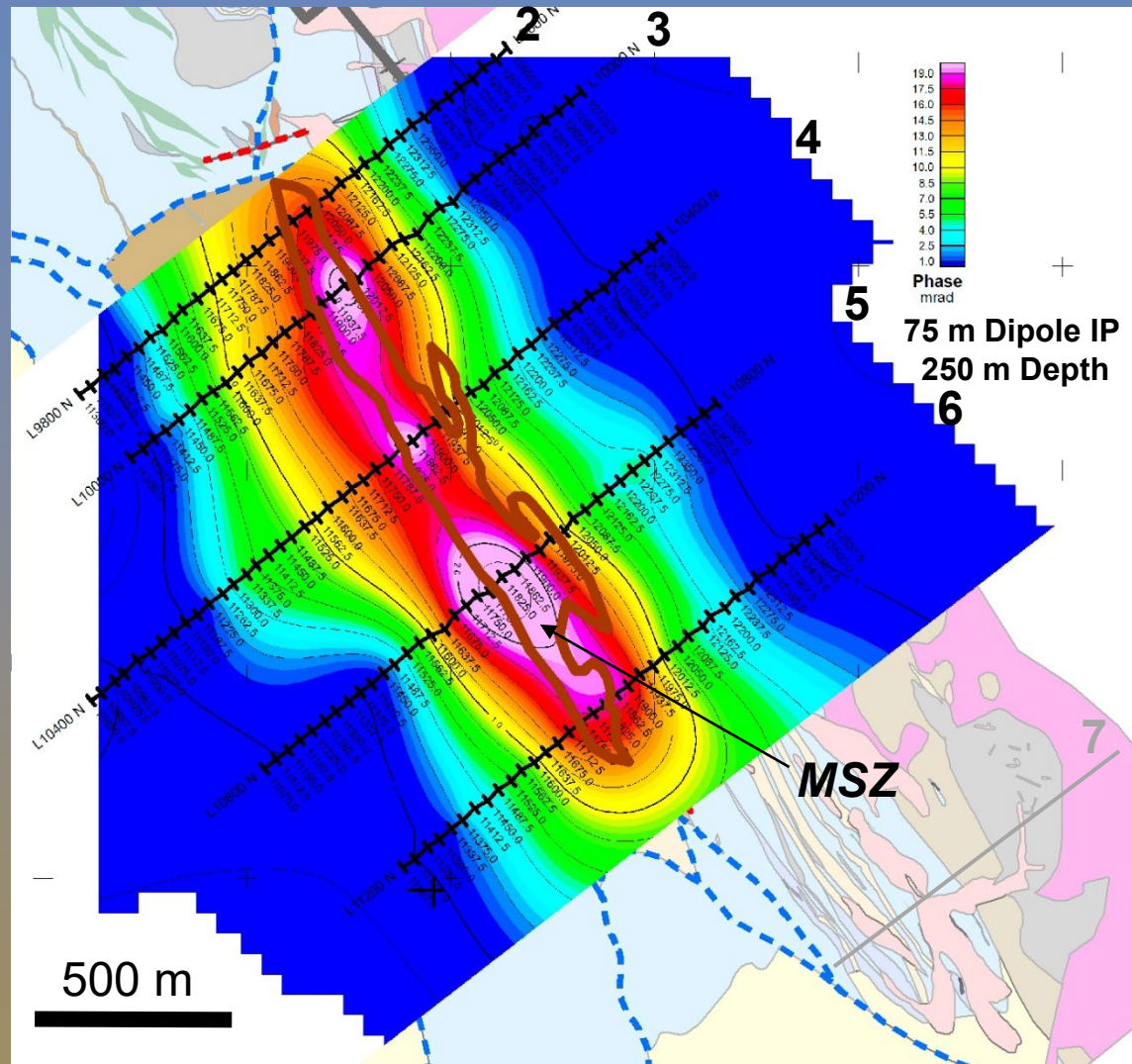
IVY IP Inversion Line 4



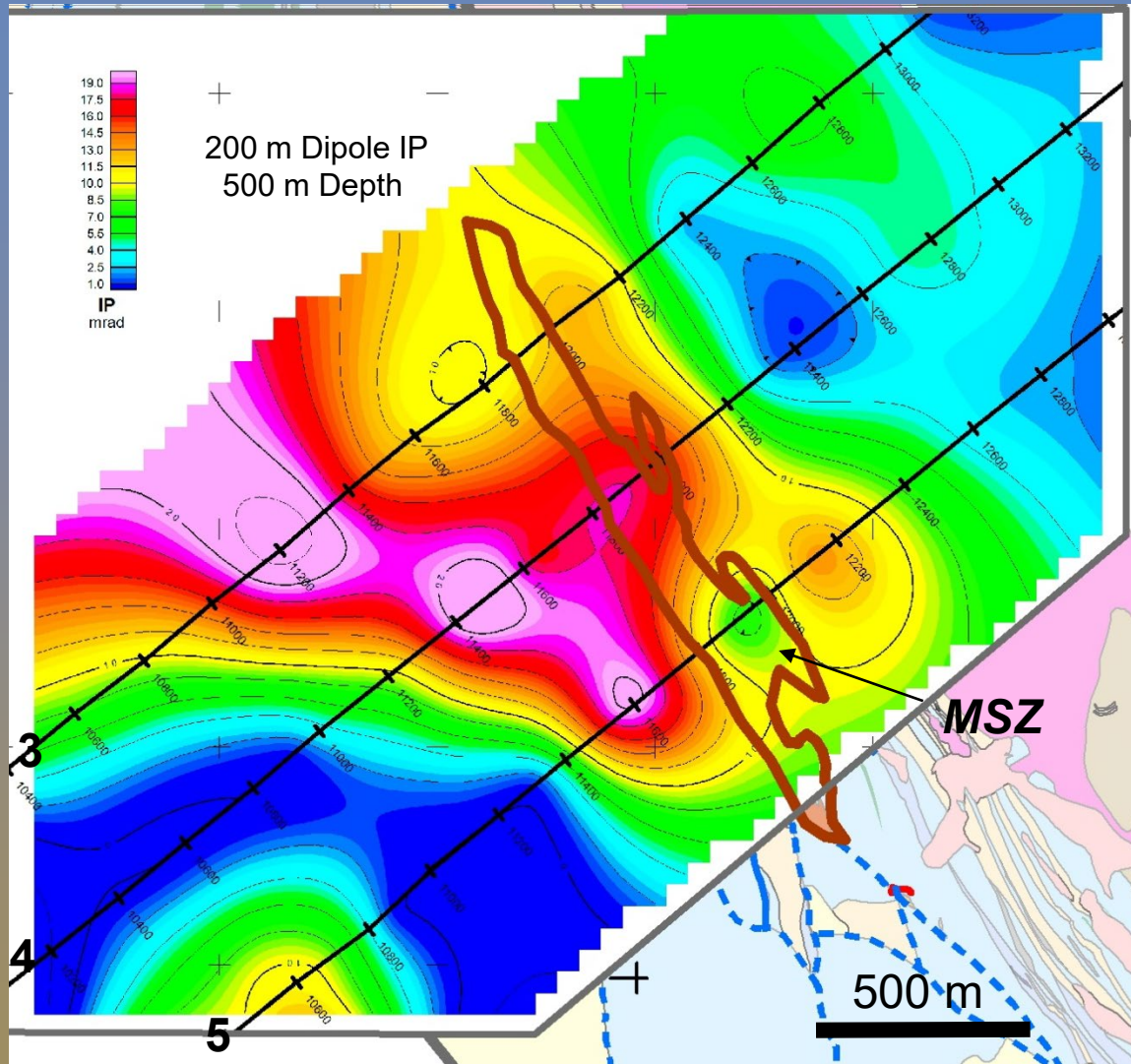
IVY IP Inversion Line 4



IVY IP DEPTH PLAN 75 m Dipoles

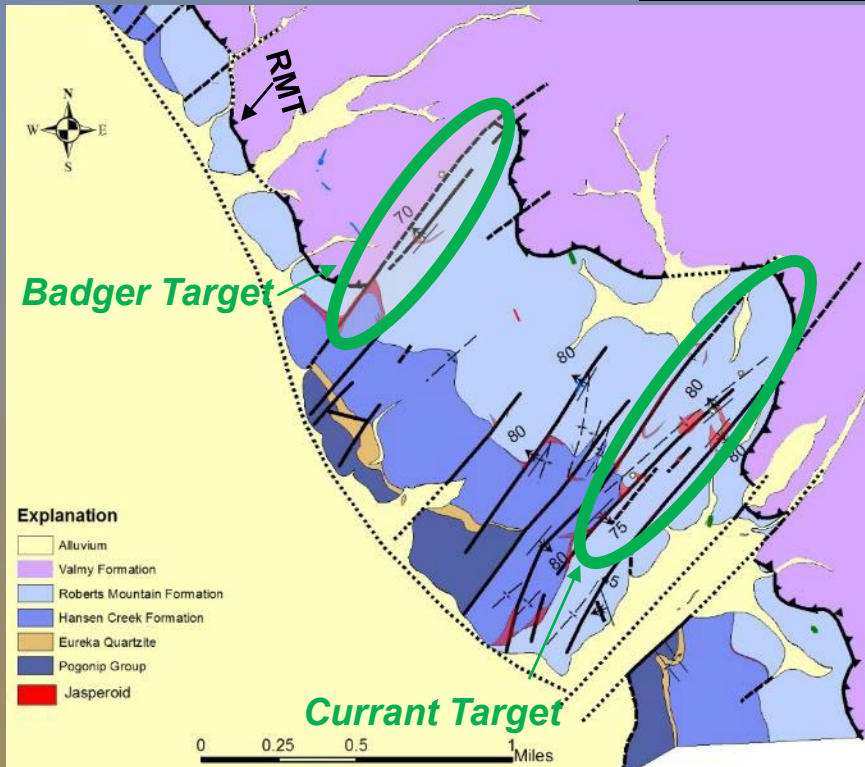


IVY IP DEPTH PLAN 200 m Dipoles



Willow Project

- Elevated Au, As in lower plate host rocks
- Silicification and Decalcification
- Drill Targets Defined
- Nearby 42 Ma altered dike



Willow Project



Silicification



Sanding/decalcification



Share Structure

19,543,964 issued/outstanding

Looking East Towards the Cortez Summit Property

**Carlin Gold Corporation
(TSX.V: CGD)**

375 Water Street, Suite 405
Vancouver, British Columbia
Canada V6B 5C6
Tel 604-638-1402

Email info@carlingold.com

www.carlingold.com

CGD:TSXV

www.carlingold.com

